



**SCOTT BANGLE  
GENERAL MANAGER/PARKS DIRECTOR**

**NOTICE OF PREPARATION  
INITIAL STUDY-MITIGATED NEGATIVE DECLARATION**

Pursuant to Riverside County Rules to Implement the California Environmental Quality Act (“CEQA”) notice is given to responsible and interested agencies and parties the County of Riverside Regional Park and Open-Space District (District) has undertaken the preparation of an Initial Study-Mitigated Negative Declaration to determine if the proposed project would have a significant environmental impact. Given that portions of the described project area are subject to both CEQA and the National Environmental Policy Act (“NEPA”) an Environmental Assessment was also undertaken. The District has preliminarily determined that the following project proposal could be adequately evaluated under the California Environmental Quality Act (CEQA) through conducting a Mitigated Negative Declaration (MND). The USACE will evaluate the proposed project under the National Environmental Policy Act (NEPA) through an Environmental Assessment (EA).

- |                           |  |
|---------------------------|--|
| <b>Proposal Title</b>     | Santa Ana River Trail Master Plan and Initial Study-Mitigated Negative Declaration   |
| <b>Project Proposal</b>   | The County of Riverside, the “Proponent”, has submitted an Initial Study-Mitigated Negative Declaration (IS-MND) to evaluate the potential environmental effects associated with the development and operation of the proposed Corona-Norco-Eastvale segment of SART.                            |
| <b>Location</b>           | The area that is the subject of this request is located in the western portion of Riverside County, California. The study area extends from the State Route 71 adjacent to Prado Basin below the Prado Dam in the west to the Hidden Valley Wildlife Area in the east along the Santa Ana River. |
| <b>Public Involvement</b> | The County of Riverside is inviting the general public to submit comments on potential environmental impacts that could result from implementation of the proposal. The proposed IS-MND/EA are available for public review at the following locations:   |

Web-sites:

Riverside County Regional Park and Open-Space Web-site:  
<http://www.Rivcoparks.org>

City of Corona Web-site:  
<http://www.discovercorona.com/City-Departments/Parks---Community-Services.aspx>

The following Public libraries:

Corona Public Library  
650 S. Main Street  
Corona, CA 92882

Eastvale Public Library  
7447 Scholar Way  
Eastvale, CA 92880

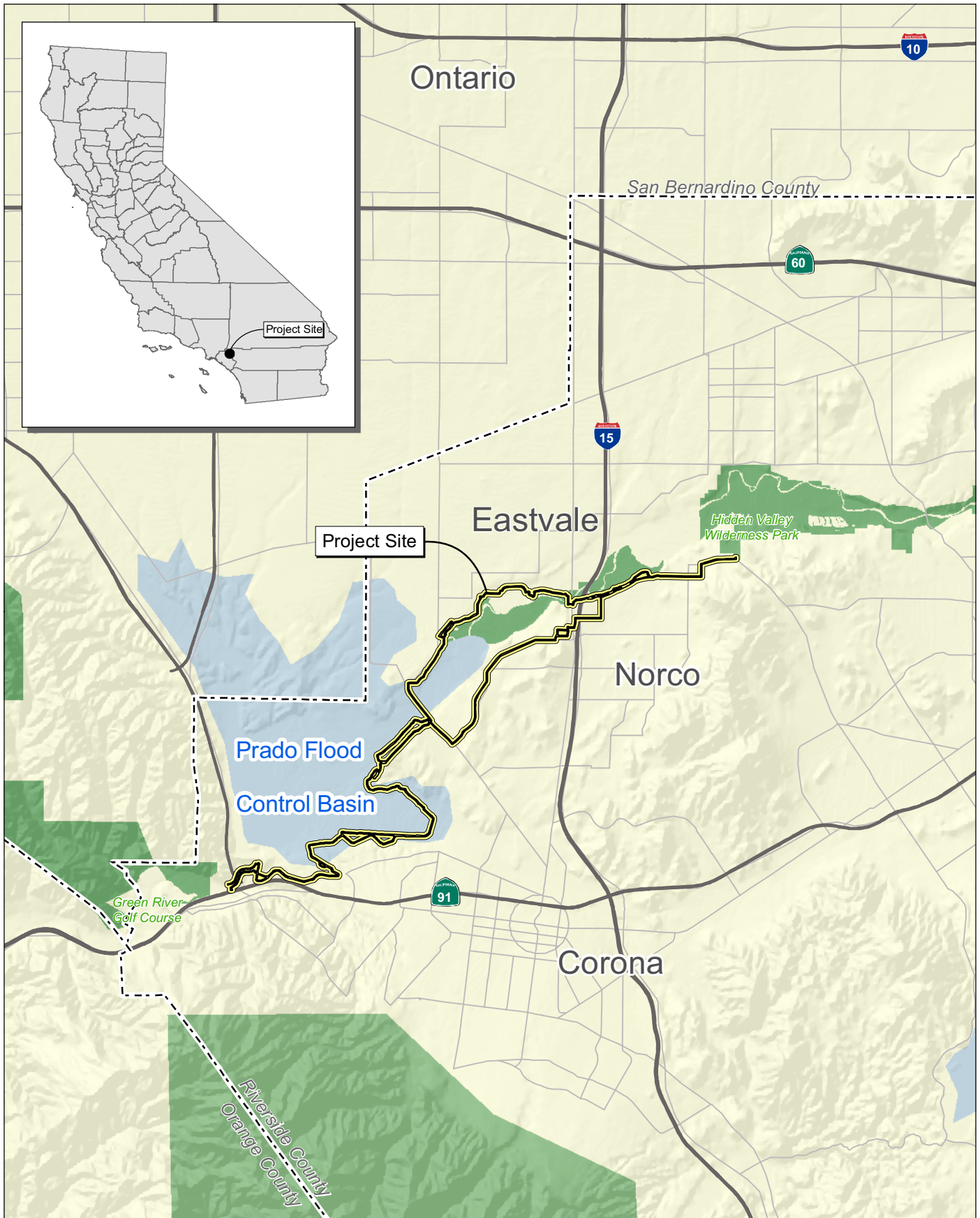
Norco Public Library  
3954 Old Hamner Road  
Norco, CA 92860

Riverside City Library  
3581 Mission Inn Avenue  
Riverside, CA 92510

Louis Robidoux Library  
5840 Mission Boulevard  
Riverside, CA 92509

The public comment period on the draft IS-MND described above would extend from December 2, 2011 to January 15, 2012. The County will consider all submissions received on or before January 15, 2012. Please direct comments to Marc Brewer, Senior Planner, County of Riverside Regional Park and Open-Space District 4600 Crestmore Road, Riverside, CA 92509-6858. If you have any questions or would like additional information, please contact Marc Brewer at (951) 955-4310.

The District will actively consider any comments timely received. The results of this consideration will be reflected in a memorandum for record placed in the Administrative Record, unless consideration of the comments are reflected directly in the IS-MND, either through a modification of the document prompted by the comments or an appendix to the IS-MND articulating responses to the comments. Once the IS-MND is complete, and if a MND is determined to be appropriate based upon the analysis contained in the IS-MND, pursuant to (Public Resources code Section 21000-21177) and Section 15063 of Title 14 of the California Code of Regulations (CCR), a separate notification will be sent to concerned agencies, organizations and to the interested public stating that the IS-MND is available for review. If significant effects on the quality of the human environment are subsequently identified and cannot be mitigated to a less than significant level, the County will initiate preparation of an EIR and afford the public opportunities to participate in the environmental review process.



Source: Census 2000 Data, The CaSIL, MBA GIS (2011).



Michael Brandman Associates  
34800002 • 11/2011 | 1\_regional.mxd

## Exhibit 1 Regional Location Map