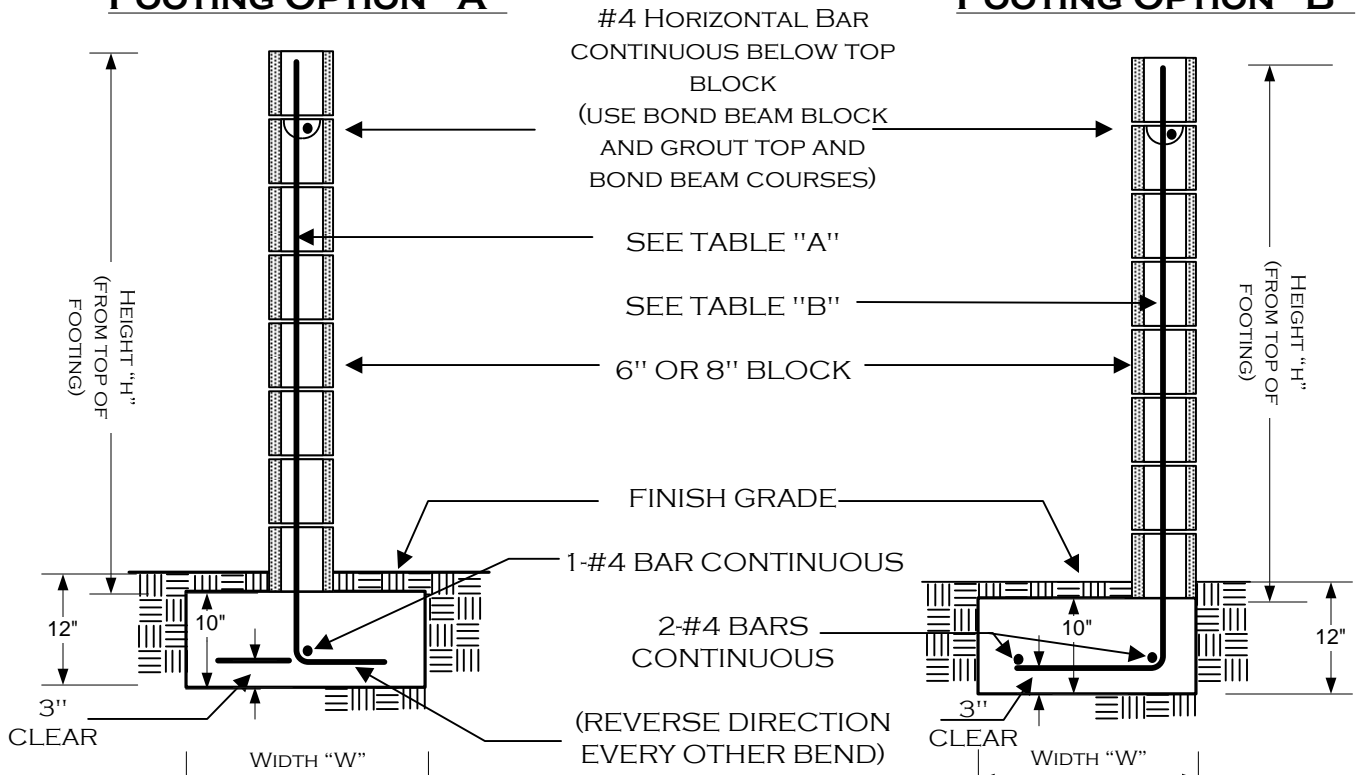


FOOTING OPTION "A"

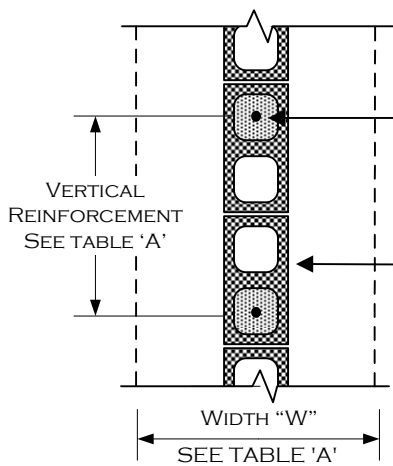
FOOTING OPTION "B"



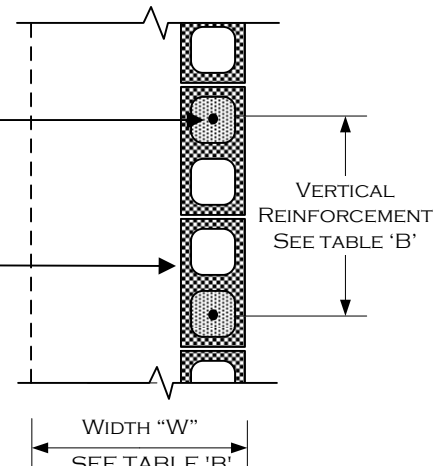
SECTION VIEW

SECTION VIEW

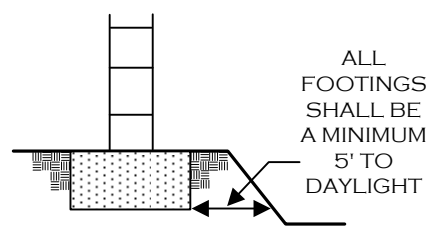
ALL STEEL SHALL BE A MINIMUM OF 3" FROM EARTH



PLAN VIEW



PLAN VIEW



INSPECTIONS REQUIRED:

- 1) FOUNDATION; EXCAVATION, TRENCH CLEAN WITH STEEL IN PLACE AND SUPPORTED WITH 3" CLEARANCE FROM EARTH.
- 2) STEEL/PREGROUT; BOND BEAM AND VERTICAL STEEL INSPECTION PRIOR TO PLACING GROUT.
- 3) FINAL; AFTER GROUT IS PLACED, PRIOR TO ANY DECORATIVE CAP PLACEMENT.

TABLE "A"			TABLE "B"		
"H"	"W"	VERTICAL REINF. #4 STEEL BARS	"H"	"W"	VERTICAL REINF. #4 STEEL BARS
3'	12"	48" O.C.	3'	12"	48" O.C.
4'	18"	48" O.C.	4'	18"	48" O.C.
5'	18"	24" O.C.	5'	24"	24" O.C.
6'	18"	24" O.C.	6'	26"	24" O.C.

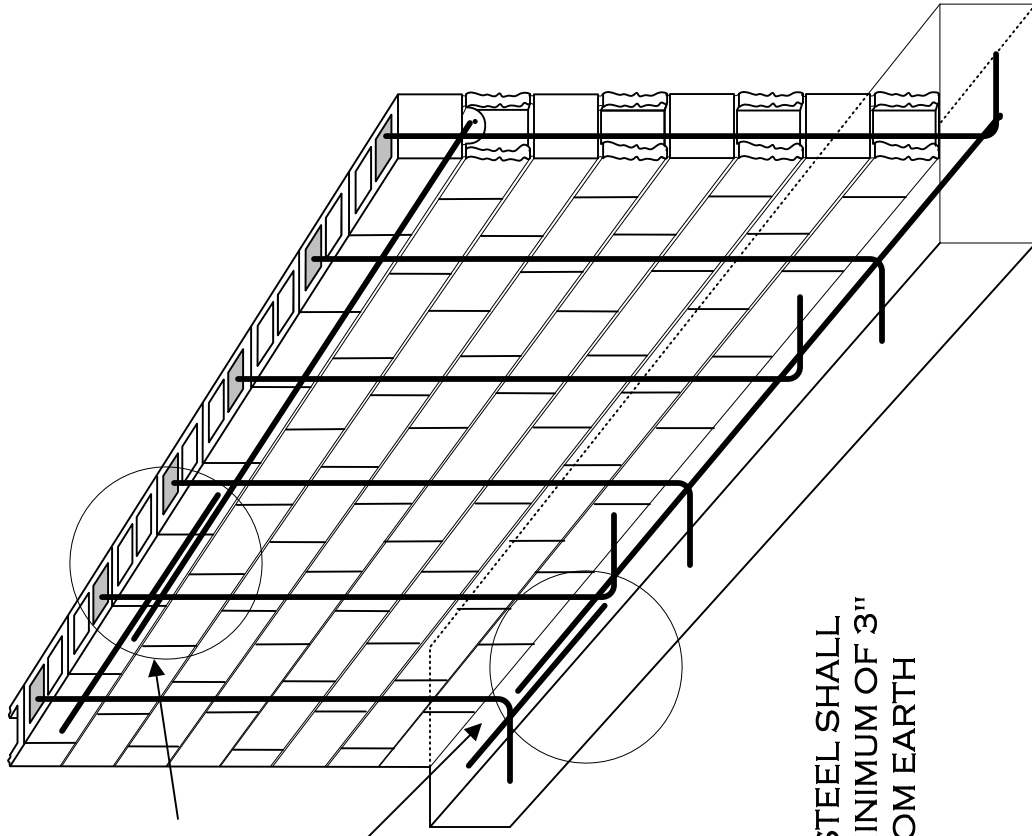
(951) 736-2250
FAX (951) 739-4893

BUILDING DEPARTMENT

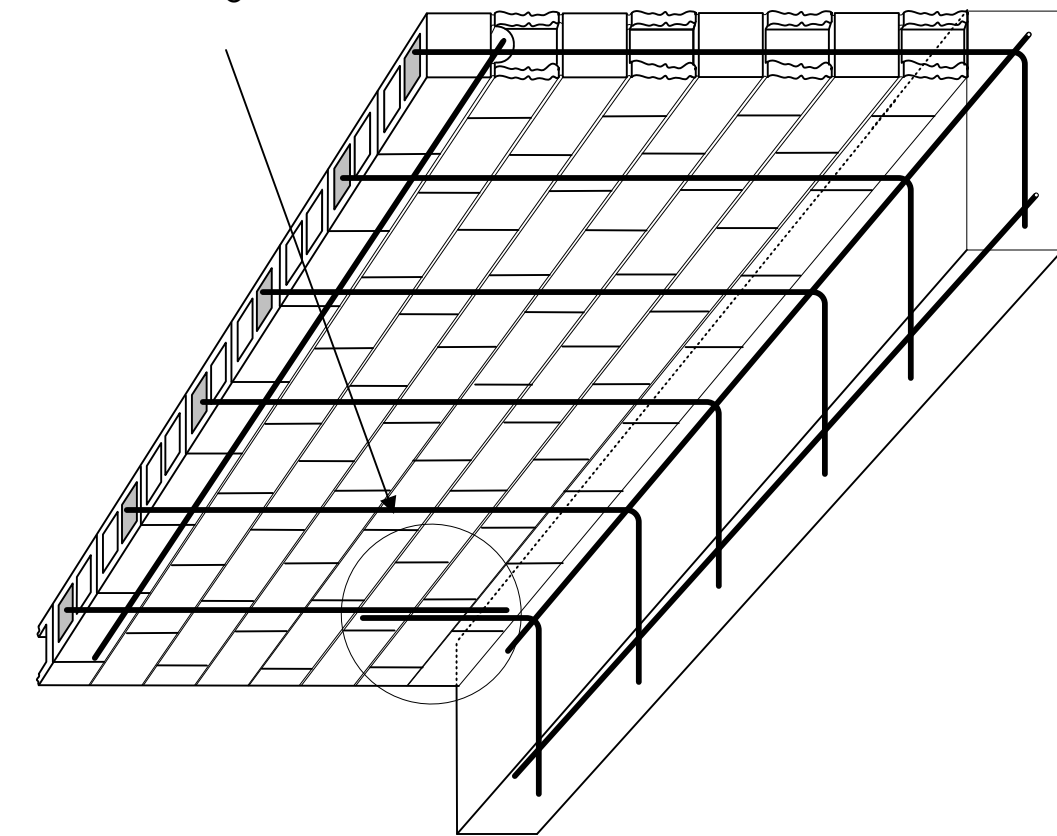
GARDEN WALL STANDARD DETAILS

400 S. VICENTIA AVE.
CORONA, CA 92882-2187

05/30/2008 [HTTP://WWW.DISCOVERCORONA.ORG/DOCS/1005.PDF](http://www.discovercorona.org/docs/1005.pdf) 1 OF 2




FOOTING OPTION A



FOOTING OPTION B

ALL STEEL SHALL
BE A MINIMUM OF 3"
FROM EARTH

MIN 24"
OVERLAP

	(951) 736-2250
	FAX (951) 739-4893

BUILDING DEPARTMENT
GARDEN WALL
STANDARD DETAILS
400 S. VICENTIA AVE. CORONA, CA. 92882-2187
05/30/2008 IGardenWall.vsd 2 OF 2