



Corona Fire Department

Address and Premises Identification Standard per 2016 California Fire Code

PURPOSE

The intent of this standard is to provide the minimum requirements necessary for the proper posting of building addresses. Building addresses enable emergency responders to locate homes, businesses, and property. Visible addresses are required by the 2016 California Fire Code, Section 505 and as amended by the Corona Municipal Code.

SCOPE

Approved numbers or addresses shall be provided for all new and existing buildings in such a position as to be plainly visible and legible from the street or road fronting the property. Addresses shall comply with Corona Municipal Code and this standard, unless an alternate means or method is approved by the Fire Marshal.

REQUIREMENTS

- A. A specific address assigned by the City of Corona, Public Works Department shall be provided for each building. The numbers shall be displayed in a location plainly visible and legible from the street or access drive fronting the property. Said numbers shall contrast in color with their background.
- B. The minimum sizes of the numerals shall be as specified by the following:
 1. **Single Family Dwelling**

Four (4") inches in height, minimum, 0.5" minimum stroke width
Illuminated during all hours of darkness*
An additional sign, pole or monument may be required at the street when dwelling is set back from the street and visibility is poor.
 2. **Multi-Family Dwelling**

Twelve (12") inches in height, minimum – on the building
Six (6") inches in height, minimum – unit numbers visible from walks and drives
Three (3") inches in height, minimum – interior hallways and doors illuminated during all hours of darkness*
0.5" minimum stroke width
 3. **Industrial/Commercial/Office**

Twelve (12") inches in height, minimum – on the building
Six (6") inches in height, minimum – suites (front and rear)
Three (3") inches in height – interior hallway suites; Illuminated during hours of darkness*
0.5" minimum stroke width

4. Rooftop addresses (commercial/industrial only)

Rooftop numbers shall be installed on all new commercial/industrial buildings, and may be required on existing commercial/industrial buildings undergoing tenant improvements, as determined by the Fire Marshal. Rooftop address numerals shall be three (3) feet in height; the overall width of individual numerals shall be two (2) feet with a 6" stroke, and shall be painted with black lettering on a white painted background. Arial or similar acceptable font shall be used. The space between numerals shall be two (2) feet. Numbers shall be placed parallel to the street (facing the street as if the address were visible from the street at ground level. **See illustration on page 5.** Any proposed alternate contrasting combinations shall be approved by the Fire Prevention Division.

- C. All suite identification numbers shall increase from lowest (101) to highest, in the same manner or direction as the street numbers. Suite identification assignments shall be approved prior to certificate of occupancy or final inspection.
- D. Vegetation or other site features shall not obstruct addresses numerals.
- E. Multiple buildings may require illuminated directories at the site entries.
- F. Prior to installation of addresses, signs or monuments, the Corona Fire Department shall be contacted for location approval.
- G. Any deviations from these standards will require written approval from the Fire Marshal.

ILLUSTRATIONS ATTACHED

- **ILLUMINATED DURING ALL HOURS OF DARKNESS SHALL MEAN:**

The street address assigned to the building shall be displayed in a manner approved by the Corona Fire Department and shall be illuminated by one of the following methods:

- A. An approved, listed, electric exterior light of adequate power and fixed in such a position that the required address is fully lit and can easily be read from the street or access drive that is fronting the property, during all hours of darkness. Said light shall not be controlled by a switch, but may be equipped with a light-sensitive device that will turn the light off during daylight hours. Any device employed to turn the light on and off shall be fully automatic and function without routine human intervention, or
 - B. An approved, listed address display fixture that is backlit from within the fixture and can be easily read from the street or access drive that is fronting the property during all hours of darkness. Said fixture shall not be controlled by a switch but may be equipped with a light sensitive device that will turn the fixture off during daylight hours. Any device employed to turn the fixture on and off shall be fully automatic and function without routine human intervention.
- A list of illuminated address distributors and retail outlets follows.

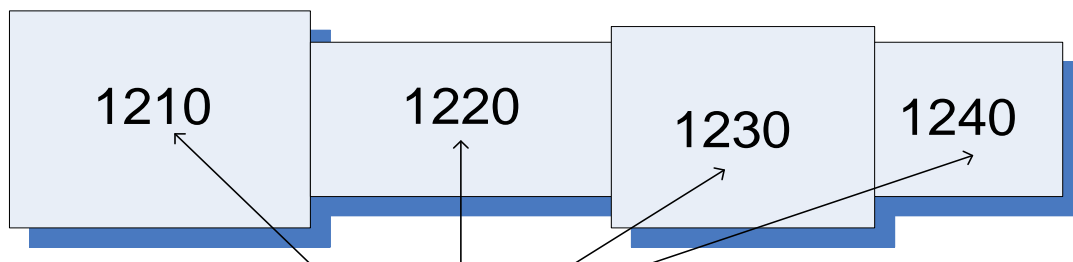
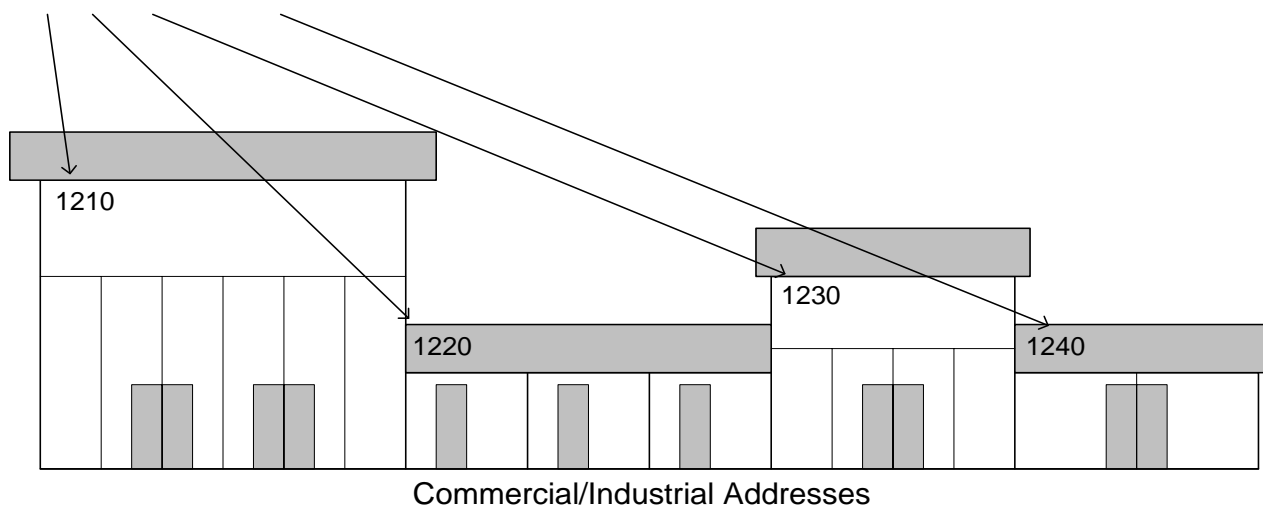
ILLUMINATED ADDRESS DISTRIBUTORS AND RETAIL OUTLETS

(All distributors listed sell to contractors. Not all sell to retail purchasers. Call first to inquire. List current as of December 2016.)

<p>Berk's Electrical 327 S Tustin Av Orange, CA 92866 www.berkseletrical.com</p> <p style="text-align: right;">(949) 857-8385 (714) 744-4300</p>	<p>Uni-Lite 1510 N. State College Anaheim, CA 92806 www.unilitelighting.com</p> <p style="text-align: right;">(714) 991-0710</p>
<p>B & C Custom Hardware 32 Tesla Dr Irvine, CA 92618 www.customhardware.net</p> <p style="text-align: right;">(949) 859-6073</p>	<p>All Around Lighting 10005 Muirlands Blvd Irvine, CA 92618 www.allaroundlighting.com</p> <p style="text-align: right;">(949) 458-5999</p>
<p>McNally Electric 10792 Los Alamitos Blvd Los Alamitos, CA 90720 www.mcnallylighting.com</p> <p style="text-align: right;">(562) 598-9438</p>	<p>Light Bulbs, Etc. 1848 Newport Blvd Costa Mesa, CA 92627 www.lightbulbsetc.com</p> <p style="text-align: right;">(949) 646-5227</p>
<p>Lamps Plus 10357 Magnolia Av Riverside, CA 92505 www.lampsplus.com</p> <p style="text-align: right;">(951) 351-8293</p>	<p>Inland Lighting Supplies Inc. 3393 Durahart Riverside, CA 92507 www.inlandlightingsupplies.com</p> <p style="text-align: right;">(800) 697-3455</p>
<p>Upland Lighting 1174 W Ninth St Upland, CA 91786 www.uplandlighting.com</p> <p style="text-align: right;">(909) 257-0503</p>	<p>Victors Lighting 1608 W. Chapman Ave Orange, CA 92868 www.victorslighting.net</p> <p style="text-align: right;">(714) 978-3945</p>
<p>Light Bulbs Etc. 658 N Tustin Ave Orange, CA 92667 www.lightbulbsetc.com</p> <p style="text-align: right;">(714) 532-1410</p>	

It is recommended that the builder or owner meet with the Fire Prevention Bureau prior to posting numbers or having any stationery, forms, business cards, etc., printed.

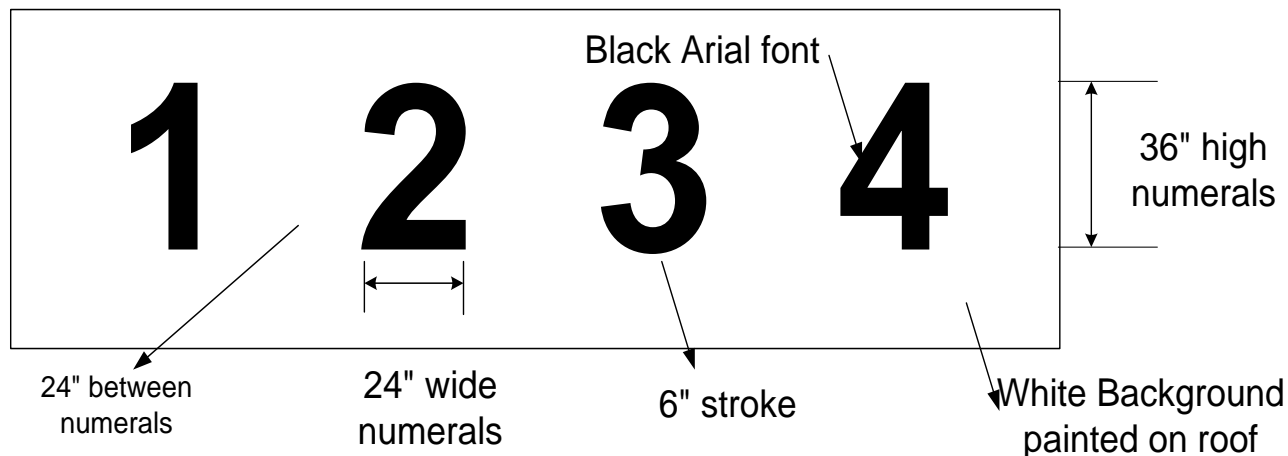
12" Building Numbers

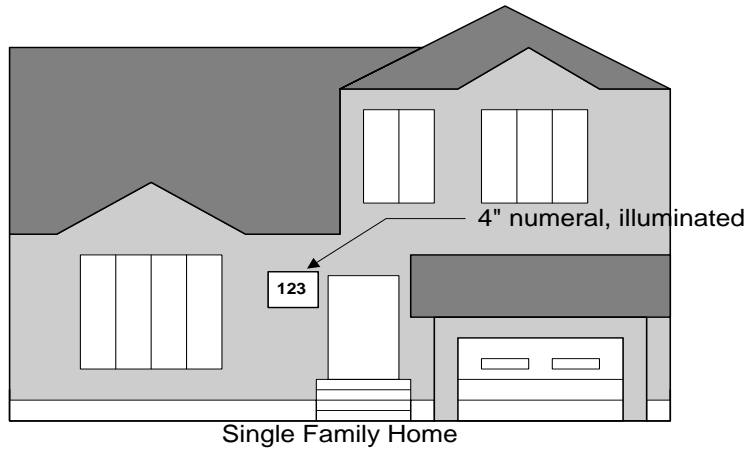


ROOFTOP ADDRESSES
3' x 2' BLACK NUMERALS ON WHITE BACKGROUND
UNLESS OTHERWISE APPROVED
ARIAL OR SIMILAR FONT

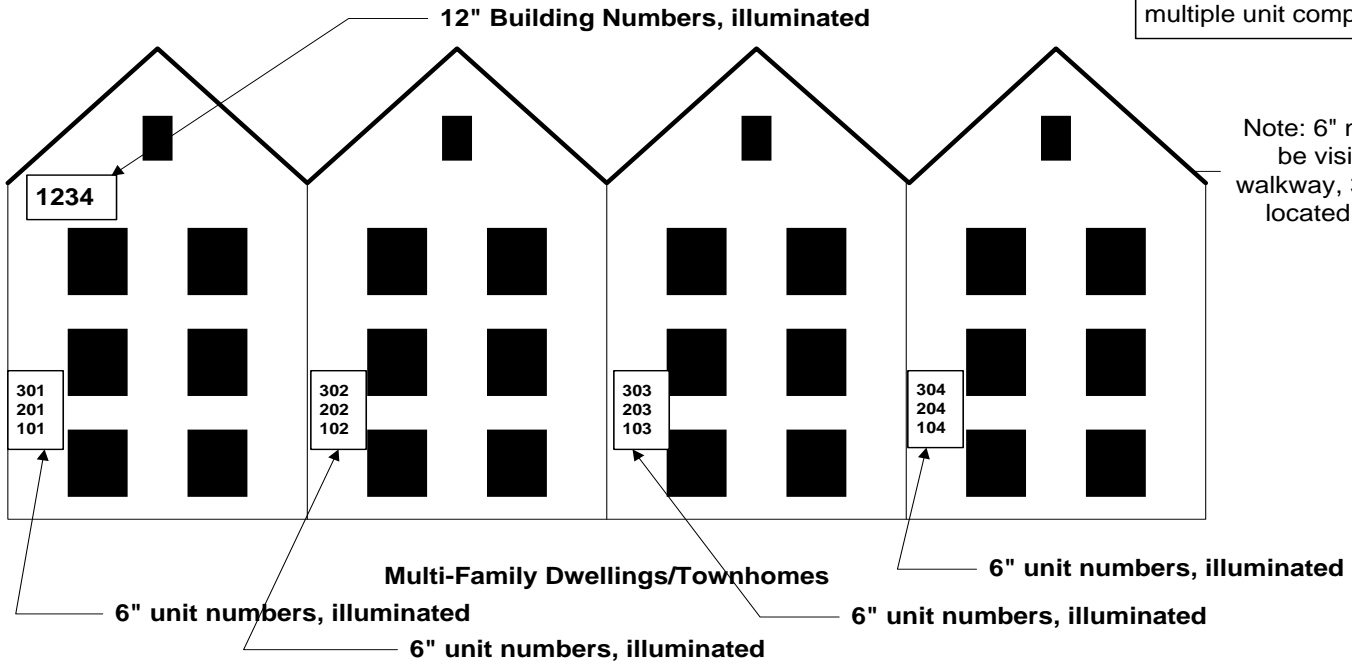
COMMERCIAL/INDUSTRIAL ROOFTOP ADDRESS MARKING

*not to scale





Monument signs or posts may be needed at entrances to long driveways, or directories may be needed to multiple unit complexes.



Note: 6" numerals to be visible from walkway, 3" numerals located on doors